

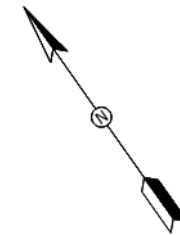
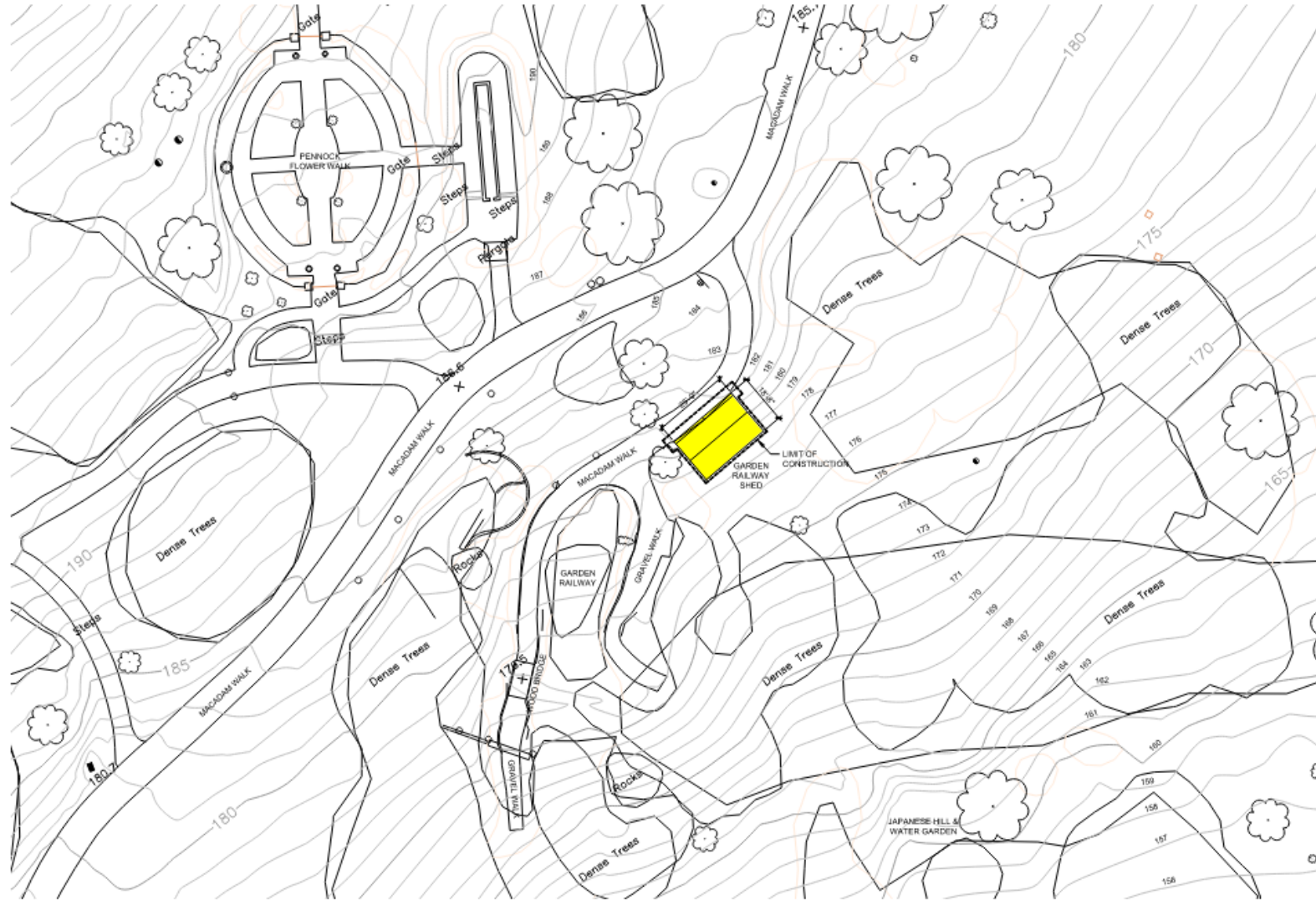
The background image shows a lush garden scene. In the foreground, there are green lawn areas and several large, rounded bushes. In the middle ground, a wooden bench is visible, surrounded by more greenery. The background is filled with tall trees, some with yellowing leaves, suggesting an autumn setting. The sky is a clear, pale blue.

GARDEN RAILWAY TRAIN STATION

MORRIS ARBORETUM & GARDENS

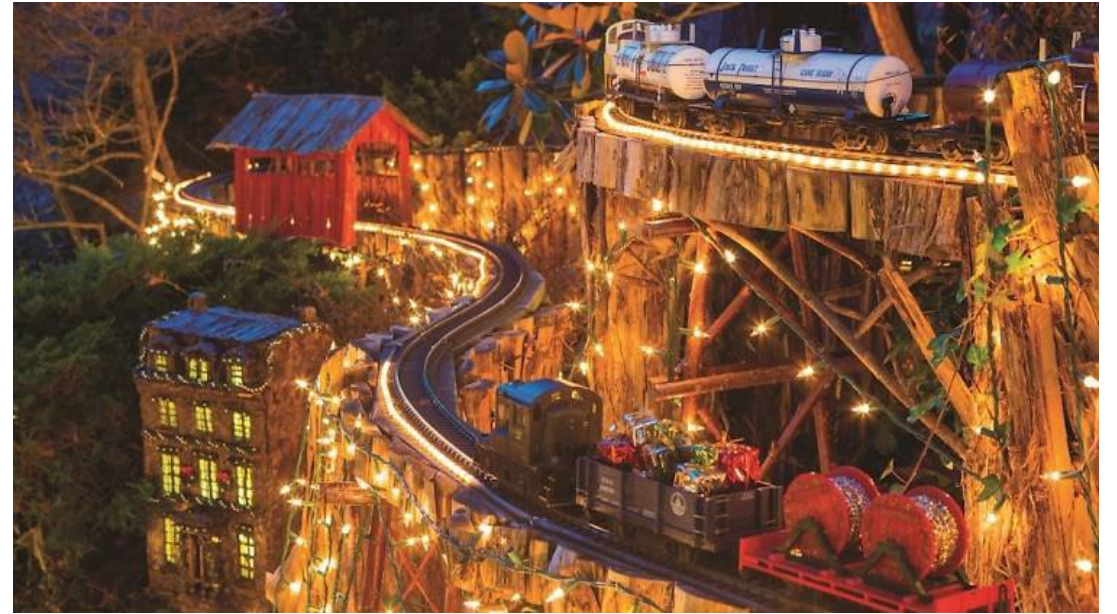
5 December 2023

DESIGN OVERVIEW - SITE PLAN



5 DECEMBER 2023

GARDEN RAILWAY EXHIBIT



5 DECEMBER 2023

EXISTING STORAGE TENT



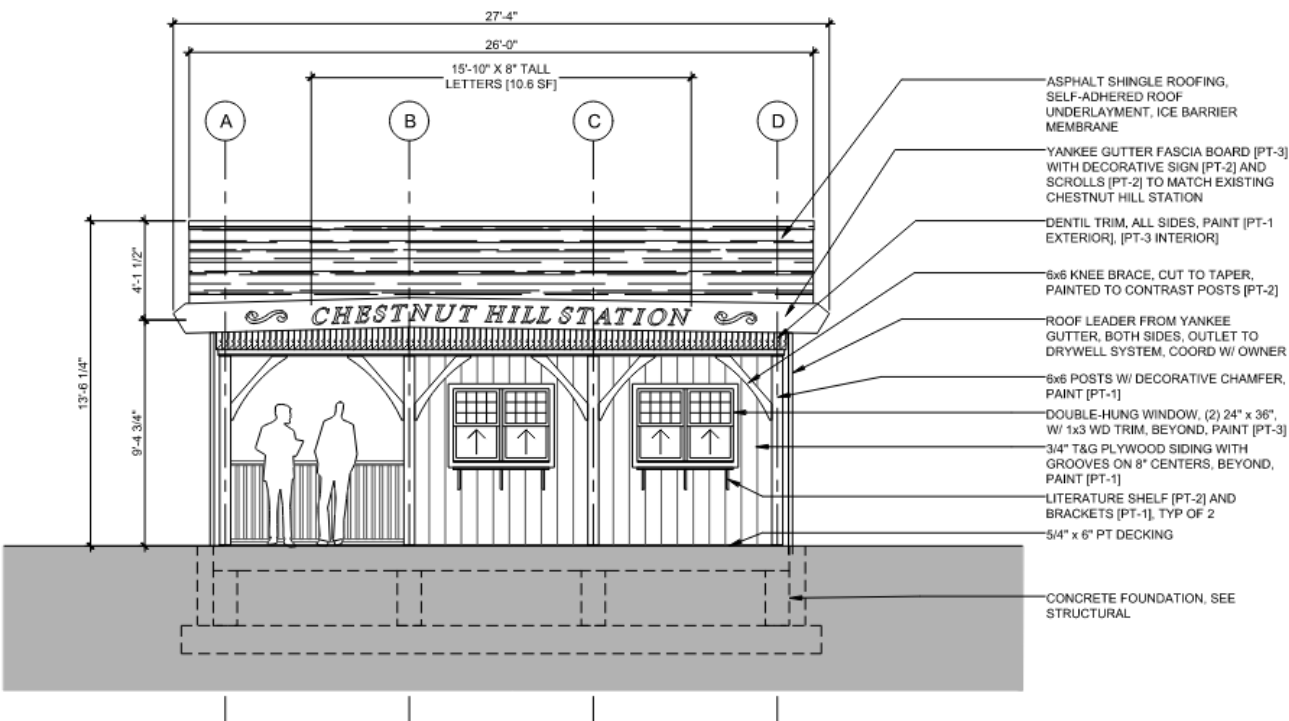
5 DECEMBER 2023

CHESTNUT HILL TRAIN STATION

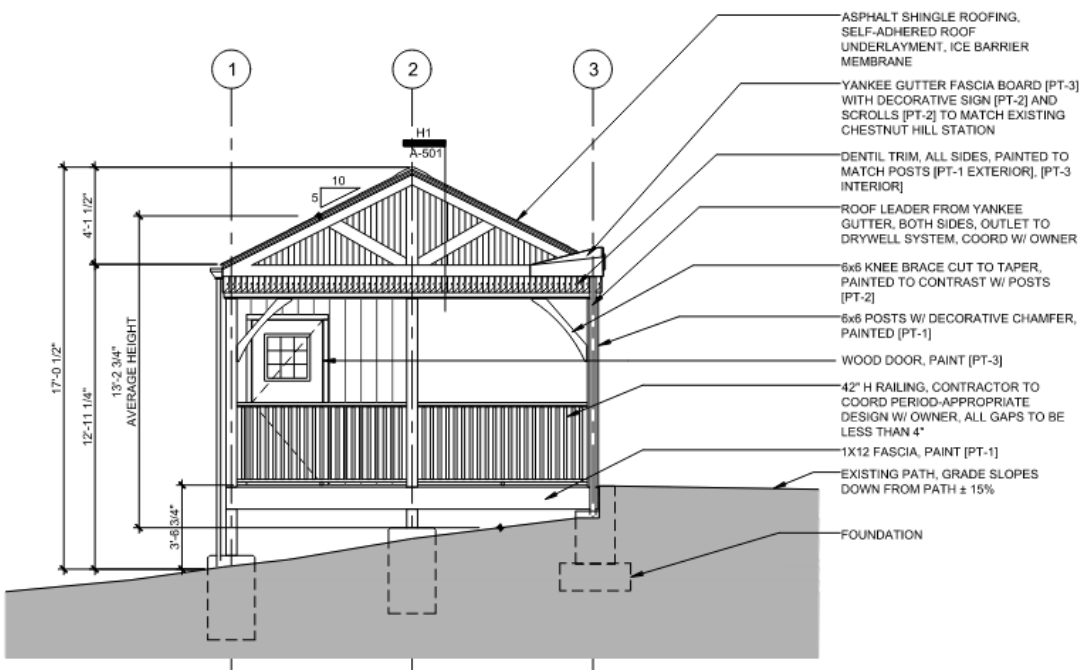


5 DECEMBER 2023

DESIGN OVERVIEW - ELEVATIONS



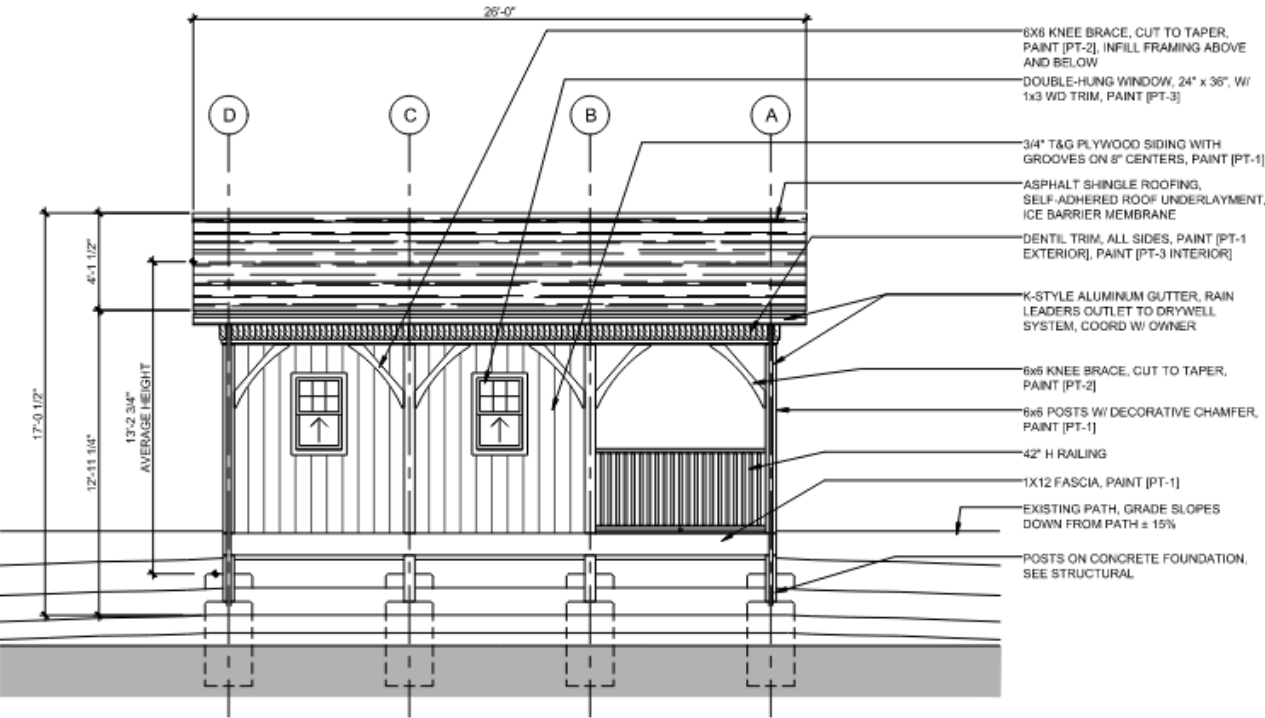
NORTH ELEVATION



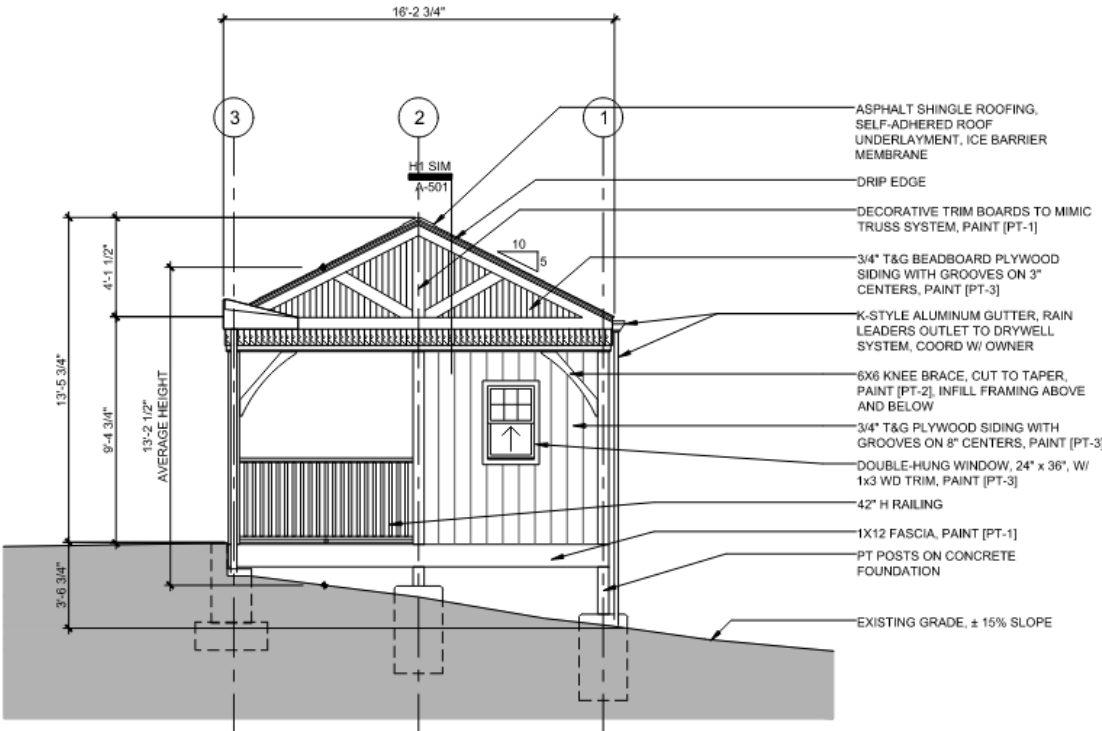
EAST ELEVATION

N.T.S.

DESIGN OVERVIEW - ELEVATIONS



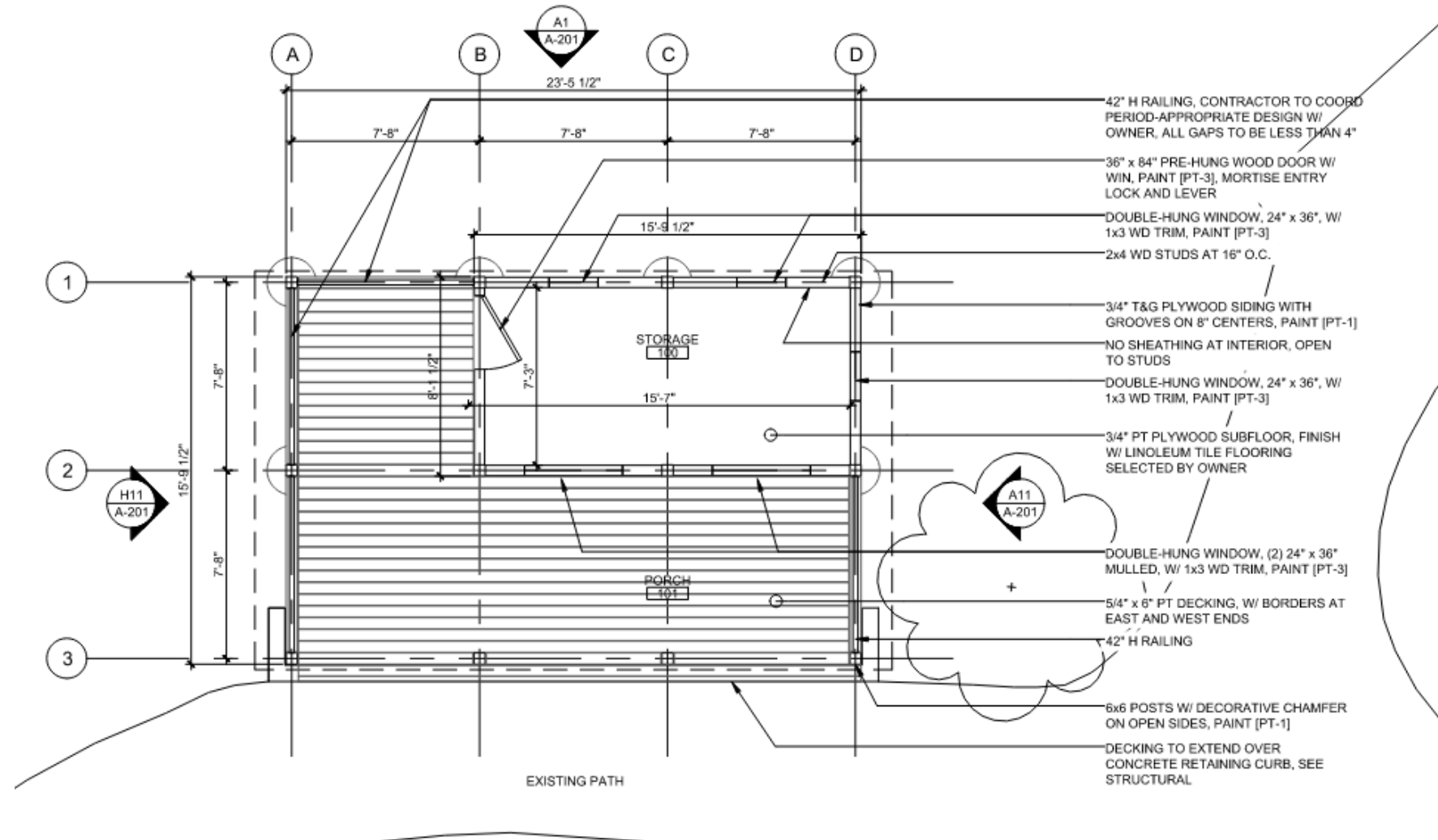
SOUTH ELEVATION



WEST ELEVATION

N.T.S.

DESIGN OVERVIEW – FLOOR PLAN



N.T.S.