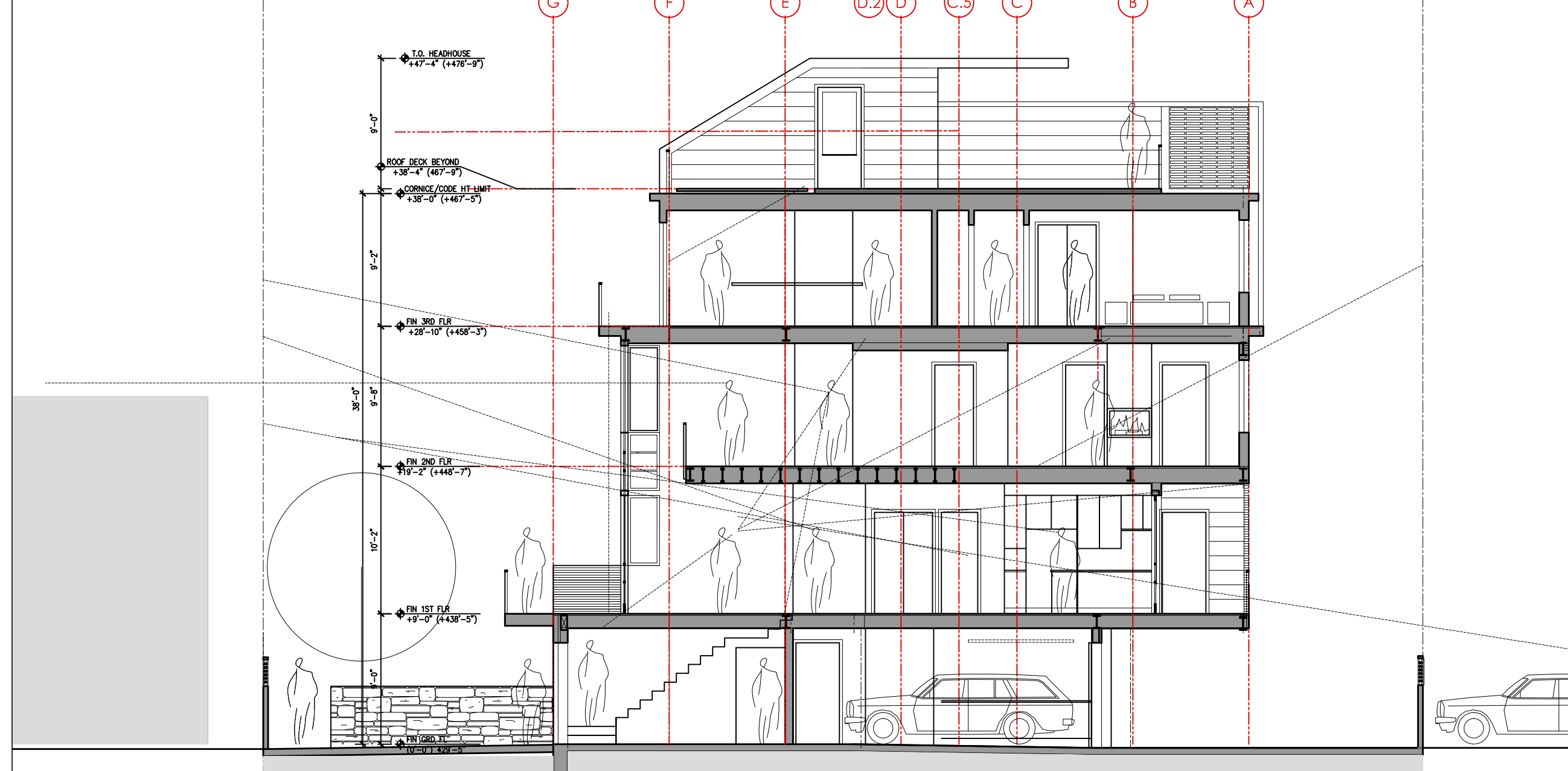


06 SECTION @ STAIR, ELEVATOR  
1/8" = 1'-0"  
30W\_SE1.dwg



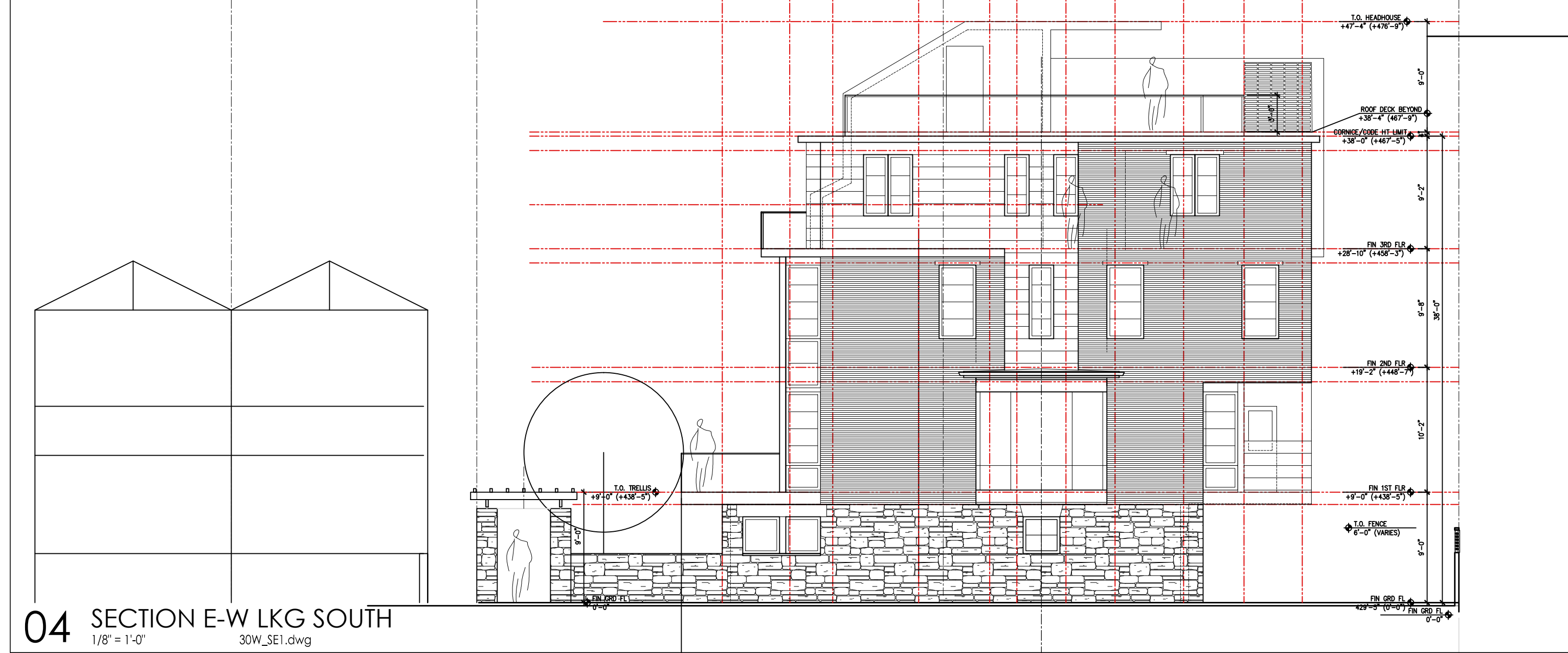
01 SOUTHWEST ELEVATION  
1/8" = 1'-0"  
30W\_SE1.dwg



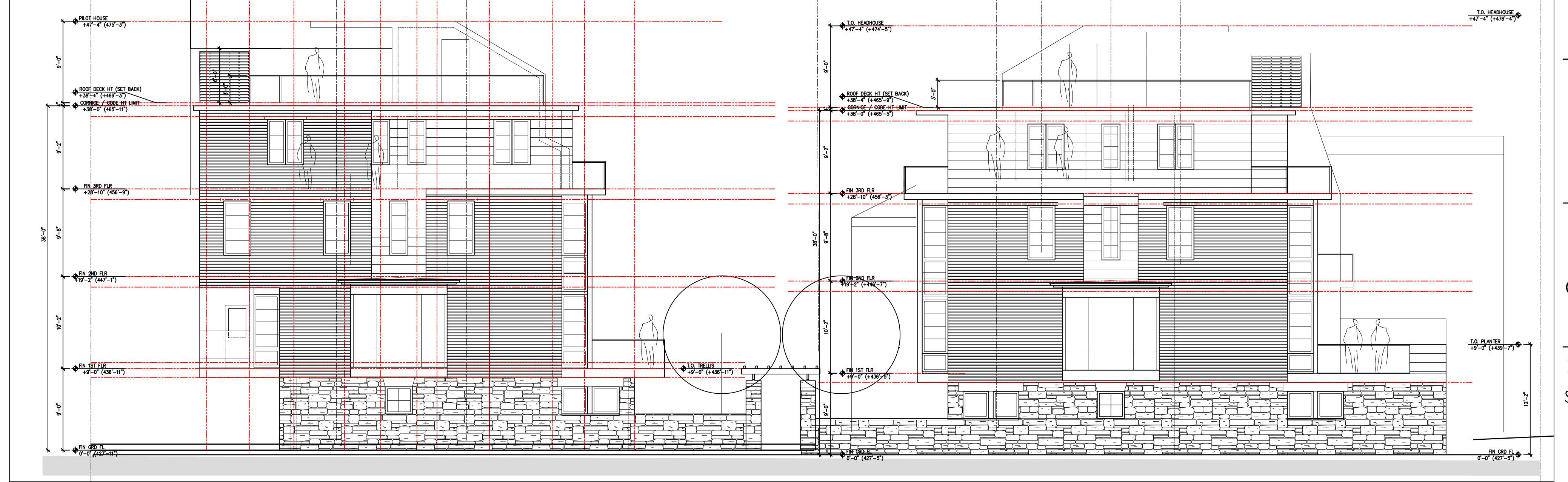
02 NORTHEAST ELEVATION  
1/8" = 1'-0"  
30W\_SE1.dwg



04 NORTHWEST ELEVATION  
1/8" = 1'-0"  
30W\_SE1.dwg



03 SOUTHEAST ELEVATION  
1/8" = 1'-0"  
30W\_SE1.dwg



04 SECTION E-W LKG SOUTH  
1/8" = 1'-0"  
30W\_SE1.dwg



TOWNHOUSE DEVELOPMENT AT 30 W HIGHLAND AVE

Notice to Contractor:  
All dimensions and existing conditions shall be checked and verified by the contractors before proceeding with the work. All materials are new unless otherwise noted.

General Notes/Legend:

201005	SUBDIV SUBMITTAL REV2
200927	SUBDIV SUBMITTAL REV1
200925	SUBDIVISION SUBMITTAL
200820	SCHEMATIC DESIGN
200817	SD REVIEW
200624	PPD REVIEW-REV2
200619	PPD REVIEW-REV1
200527	PHILA FIRE DEPT REVIEW
200220	STRUCTURAL REVIEW
190624	SITE PLAN BASE
Date:	Mark/Issue:

30 W  
TOWNHOUSE DEVELOPMENT

Architect:  
**McEWEN ARCHITECTS**  
28 WEST EVERGREEN AVE  
Philadelphia PA 19118  
Land Line 215 344 4880  
Mobile 215 356 7165  
www.McEwenArch.com

Seal:

Consultant:

COPYRIGHT 2020

NOT FOR CONSTRUCTION

Start Date: FEBRUARY 2020  
Scale: AS NOTED

SECTIONS, ELEVATIONS

**A301**  
Drawn: LDMcE  
File: 223\_A301.dwg