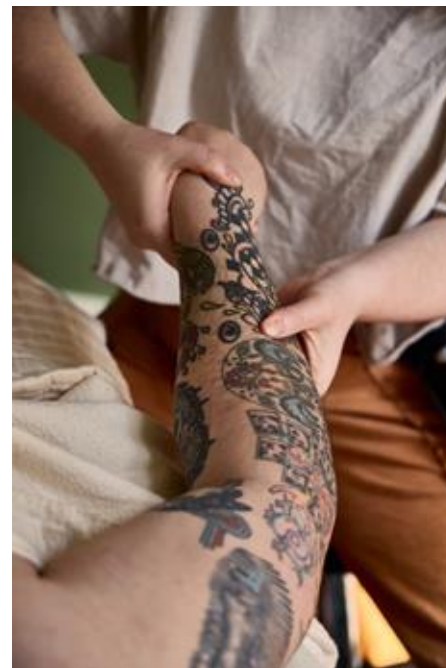


Deep Roots Bodywork and Yoga

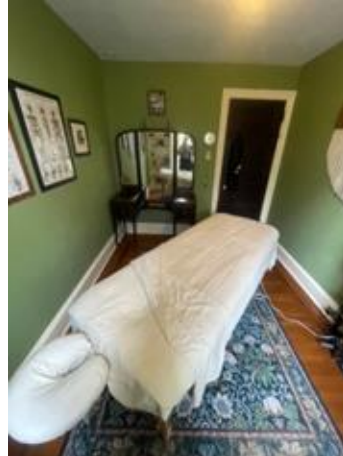
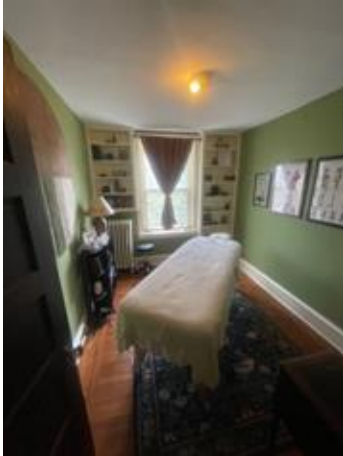
240 E Highland Ave
Philadelphia PA 19118

Madeline Schroeder



Physical Space

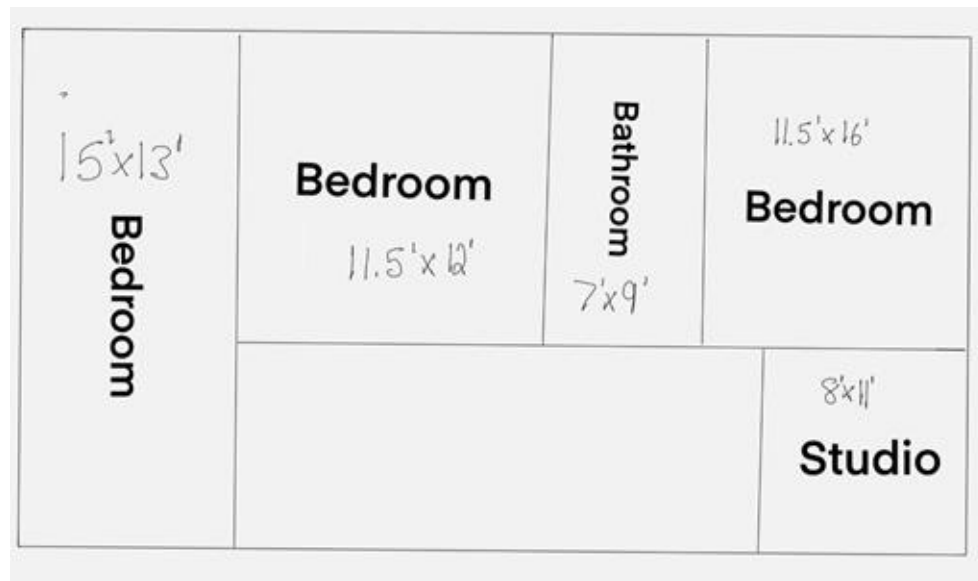
- No signs visible to the public
- No change in the exterior of the space
- No change in lighting or noticeable sound disturbance
- Square footage of the house: 1851 sqft
- Square footage of the massage space: 88 sqft



Floor Plan



First floor



Second floor

Hours of operation



Deep Roots will always be closed on holidays and Chestnut Hill Fair days

Monday: Closed

Tuesday: 9:30-11:30am and 1:00-4:00pm

Wednesday: Potentially 9:30-11:30am

Thursday: 9:30-11:30am and 1:00-4:00pm

Friday: Potentially 9:30-11:30am

Saturday and Sunday: Only if truly needed for return clients and would only be between the hours of 9-5

Parking

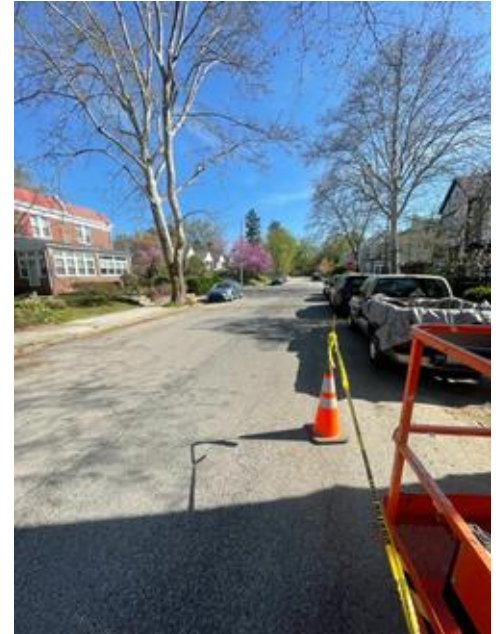
- Never more than one car at a time
- Never after 5pm so folks returning home will have the available space
- never overnight parking
- never on fair days



Tuesday at 3pm
Thursday 11:30am



Tuesday 10am



Business Intentions



- Positive member of this community
 - Massage is a healing modality and I plan to offer affordable options to this area
 - Fosters local foot traffic
 - Non-Invasive to the neighborhood
 - Offer different modalities including lymphatic drainage
-

Massage Benefits

- Provide relaxation
- Increase blood circulation
- Breaks up adhesions and stiffness in the body
- Enhanced immune function
- chronic pain relief
- Improved mobility
- increased lymphatic flow
- Improved sleep quality

Sources:

- [Mayo Clinic Benefits of Massage](#)
- [American Massage Therapy Association](#)
- [Northwestern Evidence Based Reasons to get a Massage](#)
- [Cleveland Clinic - Lymphatic Massage](#)



Signatures of Non- Opposition

And a letter of support from 238 E Highland!

Petition of Non-Opposition

In signing this you confirm that you do not oppose the zoning variance required to operate a massage therapy practice out of 240 E Highland Ave.

234 1 Lynda Miller Calender

229 2 MarTay

3 Caro K

4 Pat M

5 CPB

6 Ellynn Dyer

7 Chris Banta

236 8 Tranica Dearing

210 9 Sasha Sunday

210 10 Mike Provench

232 11 John E. Green

12 Richard Burt

13 Rev. GEORGE W. R.

229 14 Alice Eisler

307 15 A. V.

312 16 Karen Benwick

~~312~~ [Signature]

234 18 [Signature]

19 [Signature]

211 20 Heidi Jankowski

255 21 [Signature]

made