

18 Hilltop Road



Current Use: Mixed

- 1st Fl: vacant office
- 2nd Fl: one 2 bedroom / 1.5 bathroom apartment (1230 sf)

Proposed Use: Residential

- 1st Floor: New 2 bedroom / 2 bathroom apartment (1140 sf)
- *2nd Floor - No Change to Existing Apartment*

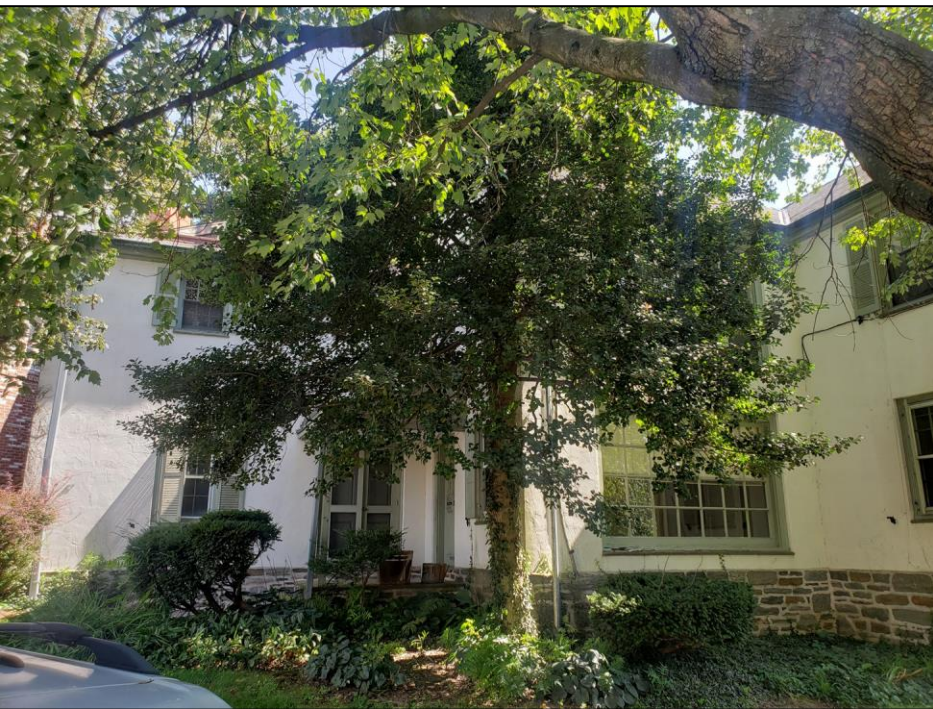
EXISTING APARTMENT

Commercial
windows on 1st
Floor will have
sills raised and
converted to barn
sash windows
above eye level

PROPOSED APARTMENT



FROM C.H. PARKING FOUNDATION PURPLE
LOT



HILLTOP RD ELEVATION



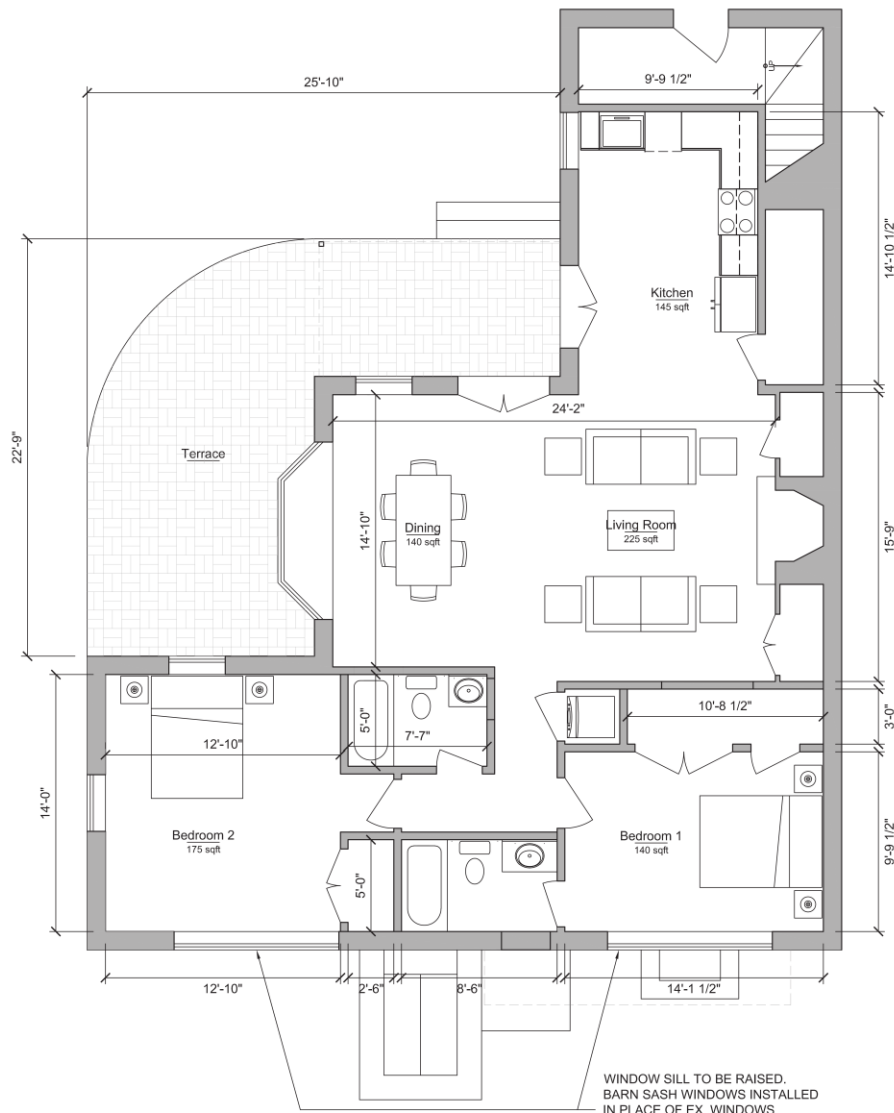
VIEW FROM PARKING
LOT ENTRANCE



ENTRY DOOR FOR PROPOSED 1ST FL APT.



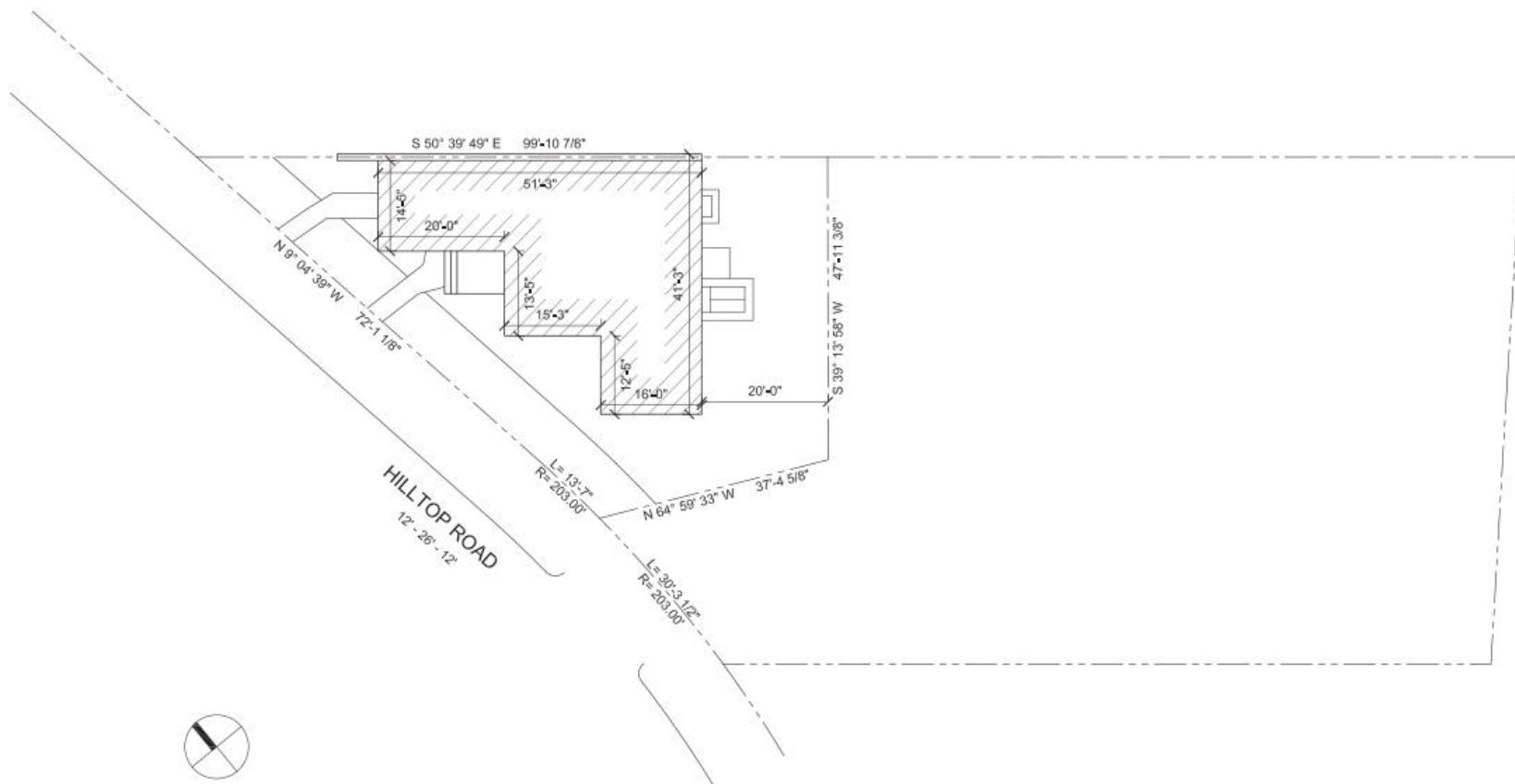
2ND FL APARTMENT DOOR



18 HILLTOP ROAD - PROPOSED APARTMENT 1140 SQFT

18 Hilltop Rd - Proposed Plan

- Converting Entire First Floor Commercial Office Space to a 1140 sq. ft. Two Bedroom / Two Bathroom Apartment with Private Entry, Private Terrace, Off-Street Parking, Central AC, and In-Unit Laundry
- *No Change to 2nd Floor Apartment*



18 HILLTOP ROAD - SITE PLAN
SCALE: 1" = 16'-0"



270 W. WALNUT LANE.
1ST FLOOR.
PHILADELPHIA, PA 19144
T: 267-872-9360
WWW.C2-ARCHITECTURE.COM

BOWMAN PROPERTIES
8238 GERMANTOWN AVENUE
PHILADELPHIA PA 19118